

\*TM11-6625-488-40P

DEPARTMENT OF THE ARMY TECHNICAL MANUAL

**GENERAL SUPPORT MAINTENANCE REPAIR PARTS AND  
SPECIAL TOOLS LISTS (INCLUDING DEPOT MAINTENANCE  
REPAIR PARTS AND SPECIAL TOOLS)  
PREAMPLIFIER AM-3148/USM  
(FSN 6625-875-1058)**

Headquarters, Department of the Army, Washington, DC  
20 December 1974

*Current as of 1 October 1974*

	Paragraph	Page
Section I. INTRODUCTION		
Scope .....	1-1	2
General .....	1-2	2
Explanation of columns .....	1-3	2
Special information .....	1-4	4
Location of repair parts .....	1-5	4
Abbreviations (Not applicable) .....	1-6	4
Reporting of equipment publication improvements .....	1-7	4
II. REPAIR PARTS LIST .....		6
III. SPECIAL TOOLS TEST AND SUPPORT EQUIPMENT (Not applicable)		
IV. INDEX - FEDERAL STOCK NUMBER AND REFERENCE NUMBER CROSS REFERENCE TO FIGURE AND ITEM NUMBSR .....		12

\*This manual supersedes TM 11-6625-488-45P, 1 July 1963.

# SECTION I

## INTRODUCTION

### 1-1. Scope

This manual lists repair parts and special tools required for the performance of general support and depot maintenance of the AM-3148/USM. The PCCN for the AM-3148/USM is GTEAEP for all models,

#### NOTE

No parts authorized for stockage at direct support.

### 1-2. General

This repair parts and special tools list is divided into the following sections:

*U. Repair Parts List* -Section II. A list of repair parts authorized for the performance of maintenance at the general support, and depot level. This repair parts list is arranged in alphabetical order.

*b. Special Tools, Test and support Equipment* -Section III. Not applicable.

*a. Index - Federal Stock Number and Reference Number Cross-Reference to Figure and Item Number* -Section IV. A list, in ascending numerical sequence, of all Federal stock numbers appearing in the listings, followed by a list, in alphanumeric sequence, of all reference numbers appearing in the listings. Federal stock number and reference numbers are cross-referenced to each illustration figure and item number or reference designation appearance.

### 1-3. Explanation of Columns

The following provides an explanation of columns found in the tabular list.

*a. Source, Maintenance, and Recoverability Codes (SMR).*

(1) **Source** code. Indicates the manner of acquiring support items for maintenance, repair, or overhaul of end items. Source codes are:

Code	Explanation
P A -	Item procured and stocked for anticipated or known usage.
P B -	Item procured and stocked for insurance purposes because essentiality dictates that a minimum quantity be available in the supply systems.
PC -	Item procured and stocked and which otherwise would be coded PA except that it is deteriorative in nature.
P D -	Support item, excluding support equipment, procured for initial issue or outfitting and

Code	Explanation
	stocked only for subsequent or additional initial issues or outfittings. Not subject to automatic replenishment.
P E -	<b>Support equipment procured and stocked for initial issue or outfitting to specified maintenance repair activities.</b>
P F -	<b>Support equipment which will not be stocked but which will be centrally procured on demand.</b>
PG -	<b>Item procured and stocked to provide for sustained support for the life of the equipment. It is applied to an item peculiar to the equipment which because of probable discontinuance or shutdown of production facilities would prove uneconomical to reproduce at a later time.</b>
K D -	<b>An item of depot overhaul/repair kit and not purchased separately. Depot kit defined as a kit that provides items required at the time of overhaul or repair.</b>
K F -	<b>An item of a maintenance kit and not purchased separately. Maintenance kit defined as a kit that provides an item that can be replaced at organizational or direct support or general support levels of maintenance.</b>
KB —	<b>Item included in both a depot overhaul/repair kit and a maintenance kit.</b>
MO —	<b>Item to be manufactured or fabricated at organizational level.</b>
MF —	<b>Item to be manufactured or fabricated at direct support maintenance level.</b>
MH —	<b>Item to be manufactured or fabricated at general support maintenance level.</b>
MD —	<b>Item to be manufactured or fabricated at depot maintenance level.</b>
AO —	<b>Item to be assembled at organizational level.</b>
AF —	<b>Item to be assembled at direct support maintenance level.</b>
AH —	<b>Item to be assembled at general support maintenance level.</b>
AD —	<b>Item to be assembled at depot maintenance level.</b>
XA —	<b>Item is not procured or stocked because the requirements for the item will result in the replacement of the next higher assembly.</b>
XB —	<b>Item is not procured or stocked. If not available through salvage, requisition.</b>
SC--	<b>Installation drawing, diagram instruction</b>

**Code**                      *Explanation*

sheet, field service drawing, that is identified by manufacturers' part number.

**XD** — Support items can be requisitioned with justification.

**NOTE**

Cannibalization or salvage may be used as a source of supply for any items source coded above except those coded XA and aircraft support items as restricted by AR 700-42.

(2) **Maintenance code.** Maintenance codes are assigned to indicate the levels of maintenance authorized to USE and REPAIR support items. The maintenance codes are entered in the third and fourth positions of the Uniform SMR Code format as follows:

(a) **Use (third position).** The maintenance code entered in the third position indicates the lowest maintenance level authorized to remove, replace, and use the support item. The maintenance code entered in the third position indicates one of the following levels of maintenance.

<i>Code</i>	<i>Application/Explanation</i>
<b>O</b> -	Support item is removed, replaced, used at the organizational level of maintenance.

**NOTE**

A code "C" may be used in this position to denote crew or operator maintenance performed within organizational maintenance.

<b>F</b> -	Support item is removed, replaced, used at the direct support maintenance level.
<b>H</b> -	Support item is removed, replaced, used at the general support maintenance.
<b>D</b> -	Support items that are removed, replaced, used at depot only.

(b) **Repair fourth position.** The maintenance code entered in the fourth position indicates whether the item is to be repaired and identifies the lowest maintenance level with the, capability to perform complete repair (i.e., all authorized maintenance functions). When a maintenance code is not used a dash (-) sign is entered. For multiservice equipment/systems or when a code is entered, this position will contain one of the following maintenance codes as assigned by the service(s) that **require** the code:

<i>Code</i>	<i>Application/Explanation</i>
<b>O</b> -	The lowest maintenance level capable of complete repair of the support item is the organizational level.
<b>F</b> -	The lowest maintenance level capable of complete repair of the support item is direct support.

<i>code</i>	<i>Application/Explanation</i>
<b>H</b> -	The lowest maintenance level capable of complete repair of the support item is general support.
<b>D</b> -	The lowest maintenance level capable of complete repair of the support item is the depot level.
<b>L</b> -	Repair restricted to designated Specialized Repair Activity.
<b>Z</b> -	Nonrepairable. No repair is authorized.
<b>B</b> -	No repair is authorized. The item may be reconditioned by adjusting, lubricating, etc., at the user level. No parts or special tools are procured for the maintenance of this item.

(3) **Recoverability code.** Recoverability codes are assigned to support items to indicate the disposition action on unserviceable items. The recoverability code is entered in the fifth position of the uniform SMR Code format as follows:

<i>Code</i>	<i>Explanation</i>
<b>Z</b> -	Nonrepairable item. When unserviceable, condemn and dispose at the level indicated in the first digit of the maintenance code.
<b>O</b> -	Repairable item. When uneconomically repairable, condemn and dispose at organizational level.
<b>F</b> -	Repairable item. When uneconomically repairable, condemn and dispose at the direct support level.
<b>H</b> -	Repairable item. When uneconomically repairable, condemn and dispose at the general support level.
<b>D</b> -	Repairable item. When beyond lower level repair capability, return to depot. Condemnation and disposal not authorized below depot level.
<b>L</b> -	Repairable item. Repair, condemnation, and disposal not authorized below depot/Specialized Repair Activity level.
<b>A</b> -	Item requires special handling or condemnation procedures because of specific reasons (i.e., precious metal content, high dollar value, critical material or hazardous material).

b. **Federal Stock Number.** Indicates the Federal stock number assigned to the item.

**NOTE**

For requisitioning purposes, the Federal stock number must be converted to the National stock number by adding "-OO-" after the Federal stock classification (FSC) code (first four digits). For example, FSN

6625-553-0142 converts to NSN 6626-00-553-0142.

c. **Description.** Indicates the Federal item name and a minimum description required to identify the item. The last line indicates the reference number followed by the applicable Federal Supply Code for Manufacturer (FSCM) in parentheses, The FSCM is used as an element in item identification to designate manufacturer or distributor or Government agency, etc., and is identified in SB 708-42.

d. **Unit of Measure (U/M).** Indicates the standard or basic quantity by which the listed item is used in performing the actual maintenance function. This measure is expressed by a two-character alphabetical abbreviation; e.g., ea, in, pr, etc., and is the basis used to indicate quantities and allowances in subsequent columns. When the unit of measure differs from the unit of issue, the lowest unit of issue that will satisfy the required units of measure will be requisitioned.

e. **Quantity Incorporated in Unit.** This column indicates the quantity of the item used in the equipment. Subsequent appearances of the same item in the same assembly are indicated by the letters "REF".

f. **30-Day DS/GS Maintenance Allowances.**

**NOTE**

Allowances in GS column are for GS maintenance only.

(1) The repair parts indicated by asterisk entries in separate allowance columns GS represent those authorized for use at that category of maintenance to be requisitioned on an "as required basis, until stockage is based on demand in accordance with AR 710-2.

(2) Allowance quantities are indicated in the special tool lists section for special tools, TMDE, and other support equipment.

g. **1-Year Allowances Per 100 Equipments/Contingency Planning Purposes.** Column intentionally left blank.

h. **Depot Maintenance Allowance Per 100 Equipments.** This column indicates opposite the first appearance of each item the total quantity authorized for depot maintenance of 100 equipments.

i. **Illustration.** This column is divided as follows:

(1) **Figure number.** Indicates the figure number of the illustration on which the item is shown in TM 11-6625-488-15.

(2) **Item number.** Indicates the item number or reference designation used to reference the item in the illustration.

1-4. Special Information

a. Usable on codes are included in column 3.

Uncoded items are applicable to all models. Identification of the usable on codes used in this publication are:

B A R

Used on  
AM-3148/USM

b. The following publications pertain to the AM-3148/USM and its components:

**TM 11-6625-488-15 Operator, Organizational, Field and Depot Maintenance Manual: Preamplifier AM-3148/USM.**

**TM 11-6625-488-20P Organizational Maintenance Repair Parts and Special Tools Lists: Preamplifier AM-3148/USM, FSN 6625-875-1058.**

1-5. Location of Repair Parts

a. **This manual contains one cross-reference index (sec IV) to be used to locate a repair part when either the Federal stock number or reference number (manufacturer's part number) is known. The first column in the index is prepared in numerical or alphanumeric sequence in ascending order. The reference numbers (manufacturer's part numbers) are listed immediately following the last listed Federal stock number in the index of Federal stock numbers.**

b. When the Federal stock number or reference number is known, follow the procedures given in (1) and (2) below.

(1) Refer to the index of Federal stock numbers (sec IV) and locate the Federal stock number or reference number. The FSN and reference number are cross-referenced to the applicable figure and item number or reference designation.

(2) Refer to the repair parts list (sec II) and locate the figure number (col 10a) and item number or reference designation (col 10b) as noted in the FSN index.

c. When the figure and item number or reference designation are known, scrutinize columns 10a and 10b of the repair parts list (sec II) until the item is located.

d. When the FSN, reference number, figure number, item number and reference designation are not known, scrutinize column 3 of the repair parts list (sec II), which is arranged in alphabetical order.

1-6. Abbreviations

Not applicable.

1-7. Reporting of Equipment Publication

**Improvements**

**The reporting of errors, omissions, and recommendations**

tions for improving this publication by the individual user is encouraged. Reports should be submitted on DA Form 2028 (Recommended Changes to Publications and Blank Forms) and forwarded direct to

**Commander, US Army Electronics Command,  
ATTN: AMSEL-MA-CRA, Fort Monmouth, NJ,  
07703.**

SECTION II

TM11-6625-485-40P

(1) SWR CODE	(2) FEDERAL STOCK NUMBER	(3) DESCRIPTION REFERENCE NUMBER & MFR CODE    USABLE ON CODE	(4) UNIT OF MEAS	(5) QTY INC UNIT	(6) 30-DAY GS MAINT ALLOWANCE			(7) 30-DAY GS MAINT ALLOWANCE			(8) 1-YR ALW PER 100 EQUIP ENTCCY	(9) DEPOT MAINT ALW PER 100 EQUIP	(10) ILLUSTRATION	
					(a)	(b)	(c)	(a)	(b)	(c)			(a)	(b)
					1-20	21-50	51-100	1-20	21-50	51-100			FIGURE NO	ITEM NO
XDHZZ		BUSHING, MACHINE NO-REF-DESIG.....	EA	1				*	*	*				
PAHZZ	5910-688-8702	385-010 (80009) CAPACITOR, FIXED, CERAMIC DIELECTRIC.....	EA	2				*	*	*		3	AB	
		C3404 8100018209 (191418)												
PAHZZ	5910-688-8702	CAPACITOR, FIXED, CERAMIC DIELECTRIC.....	EA	REF				*	*	*		3	AB	
		C3454 8100018209 (191418)												
XDHZZ		CAPACITOR, FIXED, CERAMIC DIELECTRIC.....	EA	1				*	*	*			AB	
		C3384												
PAHZZ	5910-721-2030	301-0000J02290 (72982) CAPACITOR, FIXED, CERAMIC DIELECTRIC.....	EA	3				*	*	*		3	AB	
		C4004												
PAHZZ	5910-721-2030	811-0002501032 (72982) CAPACITOR, FIXED, CERAMIC DIELECTRIC.....	EA	REF				*	*	*		3	AB	
		C3514												
PAHZZ	5910-721-2030	811-0002501032 (72982) CAPACITOR, FIXED, CERAMIC DIELECTRIC.....	EA	REF				*	*	*		3	AB	
		C3614												
XDHZZ		811-0002501032 (72982) CAPACITOR, FIXED, MICA DIELECTRIC C3094..	EA	2				*	*	*			AA1	
		C430A202J (02799)												
XDHZZ		CAPACITOR, FIXED, MICA DIELECTRIC C3294..	EA	REF				*	*	*			AA1	
		C430A202J (02799)												
XDHZZ		CAPACITOR, FIXED, MICA DIELECTRIC C3064..	EA	2				*	*	*			AA1	
		SW5133-1J (14655)												
XDHZZ		CAPACITOR, FIXED, MICA DIELECTRIC C3264..	EA	REF				*	*	*			AA1	
		SW5133-1W (14655)												
PAHZZ	5910-701-0038	CAPACITORS, MATCHED C3004.....	PR	1				*	*	*		3	AA1	
		295-054 (80009)												
PAHZZ	5910-701-0038	CAPACITORS, MATCHED C3204.....	PR	REF				*	*	*		3	AA1	
		295-054 (80009)												
PAHZZ	5910-754-8483	CAPACITOR, VARIABLE, CERAMIC DIELECTRIC...	EA	2				*	*	*		3	4-10	
		C3824												
PAHZZ	5910-754-8485	557-01902P034R (72982) CAPACITOR, VARIABLE, CERAMIC DIELECTRIC...	EA	REF				*	*	*		3	4-10	
		C3874												
PAHZZ	5910-126-1619	557-01902P034R (72982) CAPACITOR, VARIABLE, CERAMIC DIELECTRIC...	EA	2				*	*	*		3	4-8	
		C3624												
PAHZZ	5910-126-1619	503-0000J037H (72982) CAPACITOR, VARIABLE, CERAMIC DIELECTRIC...	EA	REF				*	*	*		3	4-8	
		C3734												
PAHZZ	5910-865-6318	503-0000P037R (72982) CAPACITOR, VARIABLE, CERAMIC DIELECTRIC...	EA	6				*	*	*		3	4-9	
		C3014												
PAHZZ	5910-865-6308	503-00002P033R (72982) CAPACITOR, VARIABLE, CERAMIC DIELECTRIC...	EA	REF				*	*	*		3	4-9	
		C3044												
PAHZZ	5910-865-6308	503-00002P033R (72982) CAPACITOR, VARIABLE, CERAMIC DIELECTRIC...	EA	REF				*	*	*		3	4-9	
		C3074												
		503-00002P033R (72982)												

SECTION II

TM 11-6625-488-40P

(1) SWR CODE	(2) FEDERAL STOCK NUMBER	(3) DESCRIPTION REFERENCE NUMBER & MFR CODE	(4) UNIT OF MEAS	(5) QTY IN UNIT	(6) 30 DAY GS WARRNT ALLIOWANCE				(7) 30 DAY GS WARRNT ALLIOWANCE				(8) ALL PER EQUIP CONTRCTN	(9) DEFECT ALLW PER EQUIP	(10) ILLUSTRATION	
					020		050		020		050				FIGURE NO	VIEW NO
					01	02	01	02	01	02	01	02				
PAHZZ	5910-000-0300	CAPACITOR, VARIABLE, CERAMIC DIELECTRIC... C3214	EA	REF	*	*	*					3	4-9			
PAHZZ	5910-000-0300	503-0002P033R (72982) CAPACITOR, VARIABLE, CERAMIC DIELECTRIC... C3214	EA	REF	*	*	*					3	4-9			
PAHZZ	5910-000-0300	503-0002P033R (72982) CAPACITOR, VARIABLE, CERAMIC DIELECTRIC... C3214	EA	REF	*	*	*					3	4-9			
PAHZZ	5910-000-0744	503-0002P033R (72982) CAPACITOR, VARIABLE, CERAMIC DIELECTRIC... C3214	EA	6	*	*	*					3	4-9			
PAHZZ	5910-000-0744	503-0002P033R (72982) CAPACITOR, VARIABLE, CERAMIC DIELECTRIC... C3214	EA	REF	*	*	*					3	4-9			
PAHZZ	5910-000-0744	503-0002P033R (72982) CAPACITOR, VARIABLE, CERAMIC DIELECTRIC... C3214	EA	REF	*	*	*					3	4-9			
PAHZZ	5910-000-0744	503-0002P033R (72982) CAPACITOR, VARIABLE, CERAMIC DIELECTRIC... C3214	EA	REF	*	*	*					3	4-9			
PAHZZ	5910-000-0744	503-0002P033R (72982) CAPACITOR, VARIABLE, CERAMIC DIELECTRIC... C3214	EA	REF	*	*	*					3	4-9			
PAHZZ	5915-003-3204	COIL, RADIO FREQUENCY 13014.....	EA	2	*	*	*					3	4B			
PAHZZ	5915-003-3204	COIL, RADIO FREQUENCY 13214.....	EA	REF	*	*	*					3	4B			
PAHZZ	5915-201-0486	CONNECTOR, RECEPTACLE, ELECTRICAL NO-REF- DESIG	EA	1	*	*	*					3				
DOZZ		20-159-16 (02600) CONNECTOR, RECEPTACLE, ELECTRICAL NO-REF- DESIG	EA	2	*	*	*					3				
PAHZZ	6625-100-1190	COUPLING, SHAF, FLEXIBLE NO-REF-DESIG... E2276-5 (76854)	EA	2	*	*	*					3				
DOZZ		ELECTRON TUBES, MATCHED V3404.....	PH	1	*	*	*						4B			
DOZZ		ELECTRON TUBES, MATCHED V3454.....	PH	REF	*	*	*						4B			
PAOZZ	5960-000-0709	ELECTRON TUBES, MATCHED V3604.....	PH	1	*	*	*					100	4B			
PAOZZ	5960-000-0709	ELECTRON TUBES, MATCHED V3704.....	PH	REF	*	*	*					100	4B			
PAOZZ	5960-134-0112	ELECTRON TUBE V3934.....	EA	2	*	*	*					100	4B			
PAOZZ	5960-134-0112	ELECTRON TUBE V3934.....	EA	REF	*	*	*					100	4B			
PAHZZ	5325-000-0700	REFLECT, METALLIC NO-REF-DESIG... A424 (03404)	EA	6	*	*	*					5				

SECTION II

T M 1 1 - 6 6 2 5 - 4 8 8 - 4 0 P

(1) SWR CODE	(2) FEDERAL STOCK NUMBER	(3) DESCRIPTION REFERENCE NUMBER & MFR CODE	(4) UNIT OF MEAS	(5) QTY INVT UNIT	(6) 30-DAY QS MAINT ALLOWANCE			(7) 30-DAY QS MAINT ALLOWANCE			(8) R-YR EQUIP CATEG	(9) DEPRN ALLN PER EQUIP	(10) ILLUSTRATION	
					(a)	(b)	(c)	(a)	(b)	(c)			(a)	(b)
					1-20	21-50	51-100	1-20	21-50	51-100			FIGURE NO	ITEM NO
PCWZ1	5325-286-6047	GUMMETS, RUBBER NO-REF-DESIG.....	EA	2				*	*	*		5		
PCWZ1	5325-281-6594	GUMMETS, RUBBER NO-REF-DESIG.....	EA	3				*	*	*		5		
PAMZ1	5345-649-8629	INSERT, SCREW THREAD NO-REF-DESIG.....	EA	3				*	*	*		5		
XDYZZ		210-494 (80009)						*	*	*				
PAMZ1	5355-685-5881	210-494 (80009)	EA	1				*	*	*		3		
PAOZ1	5355-865-3891	KNJB NO-REF-DESIG.....	EA	2				*	*	*		3		
PAOZ1	5355-720-5020	305-042 (80009)	EA	2				*	*	*		3		
PAOZ1	5355-865-3893	KNJB NO-REF-DESIG.....	EA	1				*	*	*		3		
PAOZ1	5355-865-3889	305-044 (80009)	EA	1				*	*	*		3		
PCWZ1	5340-837-6203	KNJB NO-REF-DESIG.....	EA	1				*	*	*		3		
PCWZ1	5340-837-6203	MOUNT, RESILIENT NO-REF-DESIG.....	EA	3				*	*	*		3		
PAMZ1	5940-835-2080	275-1 (80100)	EA	2				*	*	*		2		
XDYZZ		POSF, BLINDING NO-REF-DESIG.....						*	*	*				
PAMZ1	5905-252-4018	POSF, SPACER NO-REF-DESIG.....	EA	1				*	*	*				
PAMZ1	5905-252-4018	305-093 (80009)	EA	2				*	*	*		3	AB	
PAMZ1	5905-252-4018	RESISTOR, FIXED, COMPOSITION R3044.....	EA	REF				*	*	*		3	AB	
PAMZ1	5905-252-4018	RC20GF470J (801349)	EA	REF				*	*	*		3	AB	
PAMZ1	5905-299-1971	RESISTOR, FIXED, COMPOSITION R3044.....	EA	0				*	*	*		3	AB	
PAMZ1	5905-279-3513	RC20GF470J (801349)	EA	2				*	*	*		3	AB	
PAMZ1	5905-279-3513	RESISTOR, FIXED, COMPOSITION R3214.....	EA	REF				*	*	*		3	AB	
PAMZ1	5905-279-2528	RC20GF22J (801349)	EA	1				*	*	*		3	AB	
PAMZ1	5905-245-0023	RESISTOR, FIXED, COMPOSITION R3044.....	EA	1				*	*	*		3	AB	
PAMZ1	5905-279-1697	RC20GF304J (801349)	EA	1				*	*	*		3	AB	
PAMZ1	5905-279-1715	RESISTOR, FIXED, COMPOSITION R3044.....	EA	1				*	*	*		3	AB	
PAMZ1	5905-279-1718	RC20GF125J (801349)	EA	1				*	*	*		3	AB	
PAMZ1	5905-279-1718	RESISTOR, FIXED, COMPOSITION R3044.....	EA	2				*	*	*		3	AB	
PAMZ1	5905-279-1718	RC32GF904J (801349)	EA	REF				*	*	*		3	AB	
PAMZ1	5905-173-8053	RESISTOR, FIXED, COMPOSITION R3044.....	EA	1				*	*	*		3	AB	
XDYZZ		RC20GF024J (801349)						*	*	*				
XDYZZ		RESISTOR, FIXED, FILM R3084.....	EA	4				*	*	*			AB	
XDYZZ		C12-1004F (00327)						*	*	*			AB	
XDYZZ		RESISTOR, FIXED, FILM R3284.....	EA	REF				*	*	*			AB	
XDYZZ		C12-1004F (00327)						*	*	*			AB	



SECTION II

TM11-6625-488-40P

(1) SWR CODE	(2) FEDERAL STOCK NUMBER	(3) DESCRIPTION REFERENCE NUMBER & MFR CODE    USABLE ON CODE		(4) UNIT OF MEAS	(5) QTY INC IN UNIT	(6) 30-DAY QS MAINT ALLOWANCE			(7) 30-DAY QS MAINT ALLOWANCE			(8) 1-YR ALN PER EQUIP CMTY	(9) DEPOT ALN PER EQUIP	(10) ILLUSTRATION		
						(a)	(b)	(c)	(a)	(b)	(c)			(a)	(b)	
						1-20	21-50	51-100	1-20	21-50	51-100			FIGURE NO	ITEM NO	
XDZZZ		RESISTOR, FIXED, FILM	R3424	EA	REF				*	*	*				AB	
XDZZZ		RESISTOR, FIXED, FILM	R3434	EA	REF				*	*	*				AB	
PAHZZ	5905-542-9148	RESISTOR, FIXED, FILM	R3444	EA	1				*	*	*		3		AB	
XDZZZ		RESISTOR, FIXED, FILM	R3644	EA	1				*	*	*				AB	
XDZZZ		RESISTOR, FIXED, FILM	R3624	EA	2				*	*	*				AB	
XDZZZ		RESISTOR, FIXED, FILM	R3744	EA	REF				*	*	*				AB	
XDZZZ		RESISTOR, FIXED, FILM	R3614	EA	1				*	*	*				AB	
PAHZZ	5905-722-0327	RESISTOR, FIXED, FILM	R3844	EA	1				*	*	*		3		AB	
XDZZZ		RESISTOR, FIXED, FILM	R3604	EA	1				*	*	*				AB	
XDZZZ		RESISTOR, FIXED, FILM	R3634	EA	1				*	*	*				AB	
XDZZZ		RESISTOR, FIXED, FILM	R3654	EA	1				*	*	*				AB	
PAHZZ	5905-763-9208	RESISTOR, FIXED, FILM	R3854	EA	1				*	*	*		3	4-10	AB	
PAHZZ	5905-885-4682	RESISTOR, FIXED, FILM	R3684	EA	2				*	*	*		3		AB	
PAHZZ	5905-865-4682	RESISTOR, FIXED, FILM	R3714	EA	REF				*	*	*		3		AB	
XDZZZ		RESISTOR, FIXED, FILM	R3024	EA	2				*	*	*				AB	
XDZZZ		RESISTOR, FIXED, FILM	R3224	EA	REF				*	*	*				AB	
PAHZZ	5905-542-9294	RESISTOR, FIXED, FILM	R3054	EA	2				*	*	*		3		AB	
PAHZZ	5905-542-9294	RESISTOR, FIXED, FILM	R3254	EA	REF				*	*	*		3		AB	
PAHZZ	5905-865-4684	RESISTOR, FIXED, FILM	R3834	EA	2				*	*	*		3		AB	
PAHZZ	5905-865-4684	RESISTOR, FIXED, FILM	R3864	EA	REF				*	*	*		3		AB	
XDZZZ		RESISTOR, FIXED, FILM	R3824	EA	2				*	*	*				AB	
XDZZZ		RESISTOR, FIXED, FILM	R3874	EA	REF				*	*	*				AB	
PAHZZ	5905-722-0428	RESISTOR, FIXED, FILM	R3034	EA	2				*	*	*		3		AB	
PAHZZ	5905-722-0328	RESISTOR, FIXED, FILM	R3234	EA	REF				*	*	*		3		AB	
XDZZZ		RESISTOR, FIXED, FILM	R3094	EA	2				*	*	*				AB	
XDZZZ		RESISTOR, FIXED, FILM	R3294	EA	REF				*	*	*				AB	

(1) LINE CODE	(2) FEDERAL AGENCY NUMBER	(3) DESCRIPTION REFERENCE NUMBER & OFFICE USABLE ON CODE	(4) UNIT OFFICE	(5) UNIT OFFICE	(6) 30-DAY GS MAINT ALLOWANCE			(7) 30-DAY GS MAINT ALLOWANCE			(8) R-R RATED CATEGORY	(9) RATED CLASS	(10) ILLUSTRATION	
					(a)	(b)	(c)	(a)	(b)	(c)			(a)	(b)
					1-20	21-50	51-100	1-20	21-50	51-100			FILLER CODE	ITEM CODE
PAMZ	5905-884-0774	REGISTRATION, FEELING, FEELING REGISTRATION, FEELING, FEELING	EA	Z				*	*	*			3	AAJ
PAMZ	5905-889-0771	REGISTRATION, FEELING, FEELING REGISTRATION, FEELING, FEELING	EA	REFF				*	*	*			3	AAJ
PAMZ	5905-725-1531	REGISTRATION, FEELING, FEELING REGISTRATION, FEELING, FEELING	EA	Z				*	*	*			3	AAJ
PAMZ	5905-725-1557	REGISTRATION, FEELING, FEELING REGISTRATION, FEELING, FEELING	EA	REFF				*	*	*			3	AAJ
PAMZ	5905-865-5082	REGISTRATION, FEELING, FEELING REGISTRATION, FEELING, FEELING	EA	6				*	*	*			3	AAJ
PAMZ	5905-865-5082	REGISTRATION, FEELING, FEELING REGISTRATION, FEELING, FEELING	EA	REFF				*	*	*			3	AAJ
PAMZ	5905-865-5082	REGISTRATION, FEELING, FEELING REGISTRATION, FEELING, FEELING	EA	REFF				*	*	*			3	AAJ
PAMZ	5905-865-5082	REGISTRATION, FEELING, FEELING REGISTRATION, FEELING, FEELING	EA	REFF				*	*	*			3	AAJ
ZZZ		REGISTRATION, FEELING, FEELING REGISTRATION, FEELING, FEELING	EA	1				*	*	*				AAJ
PAMZ	5905-752-3883	REGISTRATION, FEELING, FEELING REGISTRATION, FEELING, FEELING	EA	Z				*	*	*			3	AAJ
PAMZ	5905-752-3885	REGISTRATION, FEELING, FEELING REGISTRATION, FEELING, FEELING	EA	REFF				*	*	*			3	AAJ
PAMZ	5905-855-5231	REGISTRATION, FEELING, FEELING REGISTRATION, FEELING, FEELING	EA	1				*	*	*			5	AAJ
PAMZ	5905-865-5231	REGISTRATION, FEELING, FEELING REGISTRATION, FEELING, FEELING	EA	REFF				*	*	*			5	AAJ
PAMZ	5905-801-3951	REGISTRATION, FEELING, FEELING REGISTRATION, FEELING, FEELING	EA	1				*	*	*			3	AAJ
ZZZ		REGISTRATION, FEELING, FEELING REGISTRATION, FEELING, FEELING	EA	6				*	*	*				AAJ
ZZZ		REGISTRATION, FEELING, FEELING REGISTRATION, FEELING, FEELING	EA	REFF				*	*	*				AAJ
ZZZ		REGISTRATION, FEELING, FEELING REGISTRATION, FEELING, FEELING	EA	REFF				*	*	*				AAJ
ZZZ		REGISTRATION, FEELING, FEELING REGISTRATION, FEELING, FEELING	EA	REFF				*	*	*				AAJ
PAMZ	5905-715-1837	REGISTRATION, FEELING, FEELING REGISTRATION, FEELING, FEELING	EA	1				*	*	*			3	AAJ
PAMZ	5905-800-0768	REGISTRATION, FEELING, FEELING REGISTRATION, FEELING, FEELING	EA	1				*	*	*			3	AAJ
PAMZ	5905-648-9119	REGISTRATION, FEELING, FEELING REGISTRATION, FEELING, FEELING	EA	Z				*	*	*			3	4-9
PAMZ	5905-648-9119	REGISTRATION, FEELING, FEELING REGISTRATION, FEELING, FEELING	EA	REFF				*	*	*			3	4-10
PAMZ	5905-722-9159	REGISTRATION, FEELING, FEELING REGISTRATION, FEELING, FEELING	EA	1				*	*	*			3	4-8
PAMZ	5905-617-7116	REGISTRATION, FEELING, FEELING REGISTRATION, FEELING, FEELING	EA	1				*	*	*			3	4-9
PAMZ	5910-886-9579	REGISTRATION, FEELING, FEELING REGISTRATION, FEELING, FEELING	EA	12				*	*	*			2	
PAMZ	5960-644-5525	REGISTRATION, FEELING, FEELING REGISTRATION, FEELING, FEELING	EA	6				*	*	*			2	

(1) SWR CODE	(2) FEDERAL STOCK NUMBER	(3) DESCRIPTION	(4) UNIT OF MEAS	(5) QTY INC IN UNIT	(6) 30-DAY QS MAINT ALLOWANCE			(7) 90-DAY QS MAINT ALLOWANCE			(8) 1-YR ALW PER 100 EQUIP CONTACT	(9) DEPOT MAINT ALW PER 100 EQUIP	(10) ILLUSTRATION	
					(a)	(b)	(c)	(a)	(b)	(c)			(a)	(b)
					1-20	21-50	51-100	1-20	21-50	51-100			FIGURE NO	ITEM NO
PAMZZ		SMILED, ELECTRON TUBE NO-REF-DESIG..... (98) TSU3402 (98442)	EA	4				*	*	*		2		
XDHZZ		SMILED, ROTARY SWITCH NO-REF-DESIG..... 227-072 (40009)	EA	4				*	*	*				
XDHZZ		SMILED, ROTARY SWITCH NO-REF-DESIG..... 227-131 (40009)	EA	4				*	*	*				
XDHZZ		SMILED, ROTARY SWITCH NO-REF-DESIG..... 400-100 (40009)	EA	4				*	*	*				
PAMZZ		SOCKET, ELECTRON TUBE AV3404..... TSU3404 (401349)	EA	6				*	*	*		3		
PAMZZ	5-892-8987	SOCKET, ELECTRON TUBE AV3454..... TSU3454 (401349)	EA	REF				*	*	*		3		
PAMZZ	5935-892-8987	SOCKET, ELECTRON TUBE AV3404..... TSU3404 (401349)	EA	REF				*	*	*		3		
PAMZZ	5935-892-8987	SOCKET, ELECTRON TUBE AV3704..... TSU3704 (401349)	EA	REF				*	*	*		3		
PAMZZ	5935-892-8987	SOCKET, ELECTRON TUBE AV3904..... TSU3904 (401349)	EA	REF				*	*	*		3		
PAMZZ	5935-892-8987	SOCKET, ELECTRON TUBE AV3904..... TSU3904 (401349)	EA	REF				*	*	*		3		
XDHZZ		SPACER, SLEEVE NO-REF-DESIG..... 200 (40034)	EA	3				*	*	*				
PAMZZ	5369-818-0002	SPACER, SLEEVE NO-REF-DESIG..... 250-002 (40009)	EA	2				*	*	*		2		
PAMZZ	5365-792-2001	SPACER, SLEEVE NO-REF-DESIG..... 200-000 (40009)	EA	14				*	*	*		2		
PAMZZ	5930-688-4580	SWITCH, ROTARY SW3..... 200-077 (40009)	EA	4				*	*	*		5		SW3
PAMZZ	5930-686-4579	SWITCH, ROTARY SW1..... 200-000 (40009)	EA	4				*	*	*		5		SW1
PAMZZ	5930-892-8856	SWITCH, ROTARY SW3404..... 200-090 (40009)	EA	4				*	*	*		5		SW
XDHZZ		SWITCH, ROTARY SW2..... 200-142 (40009)	EA	4				*	*	*				SW2
PAMZZ	5940-904-6648	TERMINAL GUARD NO-REF-DESIG..... 124-000 (40009)	EA	4				*	*	*		3		
PAMZZ	5940-833-2836	TERMINAL GUARD NO-REF-DESIG..... 124-000 (40009)	EA	4				*	*	*		3		
PAMZZ	5940-701-0011	TERMINAL GUARD NO-REF-DESIG..... 124-000 (40009)	EA	3				*	*	*		3		
XDHZZ		TERMINAL GUARD NO-REF-DESIG..... 124-100 (40009)	EA	3				*	*	*				

INDEX - FEDERAL STOCK NUMBER AND REFERENCE NUMBER  
CROSS-REFERENCE TO FIGURE AND ITEM NUMBER

FEDERAL NUMBER	FIGURE NO.	ITEM NO.	STOCK NUMBER	FIGURE NO.	ITEM NO.
5325-400-0000					
5325-400-0000					
5325-400-0000			5905-053-5231	AB	
5340-037-0203					
5390-049-0429			5905-065-4082	AB	
			5905-065-4084	AB	
			5905-065-5002	AB	
5355-045-5001					
5355-045-5020					
5355-045-5009			5905-064-0771	AA1	
5355-045-5091					
5355-045-5092			5910-120-1619	4-11	
5365-792-2001					
5365-010-0002			5910-080-0702	AB	
5905-113-0050	AB		5910-701-0030	AA1	
5905-242-4014	AB		5910-721-2030	AB	
5905-279-1097	AB		5910-751-0403	4-10	
5905-279-1713	AB		5910-800-6744	4-9	
5905-279-1714	AB		5910-802-0300	4-9	
5905-279-2523	AB				
5905-279-2513	AB		5910-804-9579		
5905-279-2513	AA1		5915-001-2204	AB	
5905-542-9143	AB				
5905-542-9294	AA1		5930-000-4579		Sub
5905-617-7116	4-9		5930-000-4500		Sub
5905-640-9119	4-10				
5905-640-9119	4-9				
5905-713-1097	AB		5930-092-0056	AB	
5905-742-0327	AB				
5905-742-0328	AA1				
5905-742-9150	4-9		5935-201-0476		
5905-742-1597	AA1		5935-092-0907		
			5940-701-0011		
			5940-033-2836		
			5940-033-2000		
			5940-904-0040		
5905-752-1001	AB		5940-134-0012	AB	
5905-763-9200	4-10		5940-204-3004		
5905-800-0700	AB		5940-044-5523		
5905-001-3951	AB		5940-000-0709	AB	
			0625-700-7100		

REFERENCE NO.	NFR CODE	FIG. NO.	ITEM NO.	REFERENCE NO.	NFR CODE	FIG. NO.	ITEM NO.
A424	00404			C13-1433F	00327	AB	
04004-012	71590	4-9		C13-5002F	00327	AB	
04004-012	71590	4-10		J25171D	01121	AB	
04004-013	71590	4-9		J302400	01121	AB	
04004-135	71590	4-9		J30292C	01121	AB	
017NPL45	91662			J423490	01121	AB	
01300010209	91410	AB		K45771	14041	AB	
C01-4941001F	90214	AA1		NC206F221J	01140	AB	
C01-4941191F	90214	AA1		NC206F304J	01140	AB	
C01-4945001F	90214	AA1		NC206F470J	01140	AB	
C01-2949051F	90214	AA1		NC206F602H	01140	AB	
CN304204J	02799	AA1		NC206F822J	01140	AB	
C12-1000F	00327	AB		NC320F125J	01140	AB	
C12-1000F	00327	AA1		NC320F504J	01140	AB	
C12-1200F	00327	AB		NC320F822J	01140	AB	
C12-1270F	00327	AB		RC320F074J	01140	AB	
C12-1002F	00327	AB		S103903	01140	AB	
C12-1013F	00327	AB		1410000411	14041	AB	
C12-2922F	00327	AB		100-103	00009	AB	
C12-3114F	00327	AB		12270-3	76004		
C12-3002F	00327	AB		124-006	00009		
C12-0231F	00327	AB		124-008	00009		
C12-7301F	00327	4-10		124-009	00009		
C12-0204F	00327	AB		124-100	00009		
C12-9303F	00327	AA1		129-073	00009		
C12-9903F	00327	AA1		1411	76005		

REFERENCE NO.	REF CODE	FIG. NO.	ITEM NO.	REFERENCE NO.	REF CODE	FIG. NO.	ITEM NO.
157-050	80000	AB		301-000	80000		
157-051	80000	AB		300-020	80000		
191FS10J002	91002			300-040	80000		
210-470	80000			300-042	80000		
210-490	80000			300-044	80000		
214-153	80000			300-125	80000		
20-150-10	80000			300-010	80000		
200-077	80000		503	300-005	80000		
200-080	80000		501	400-105	80000		
200-090	80000	AB		500733-10	14055	AAA	
200-142	80000		502	500-000CP0100	72002	4-9	
275-1	80000			500-000CP0370	72002	4-6	
290-050	80000	AAA		500-000CP0330	72002	4-9	
301-000C0102200	72002	AB		500	70005		
310-510	80000	AB		557 C1000P0300	72002	4-10	
312-502	80000	AB		61000	24072	AB	
317-072	80000			811-00015001022	72002	AB	
337-131	80000			83-1077	02000		
301-007	80000			8000	70054		

By Order of the Secretary of the Army:

**FRED C. WEYAND**  
*General, United States Army*  
*Chief of Staff*

Official:

**VERNE L. BOWERS**  
*Major General, United States Army*  
*The Adjutant General*

Distribution:

To be distributed in accordance with DA Form 12-32, (qty rqr block no. 993) Direct and General Support maintenance requirements for AN/GSG-5.

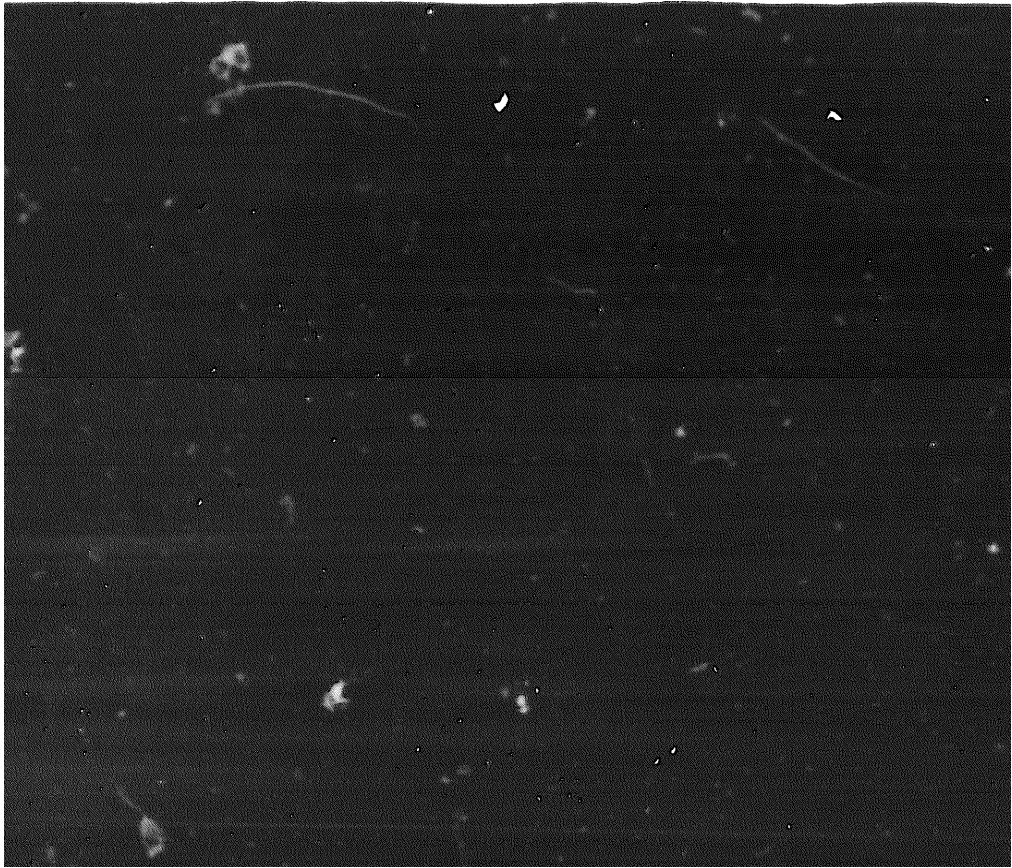
☆ U. S. GOVERNMENT PRINTING OFFICE: 1974-485136/427

**END**

**01-03-83**

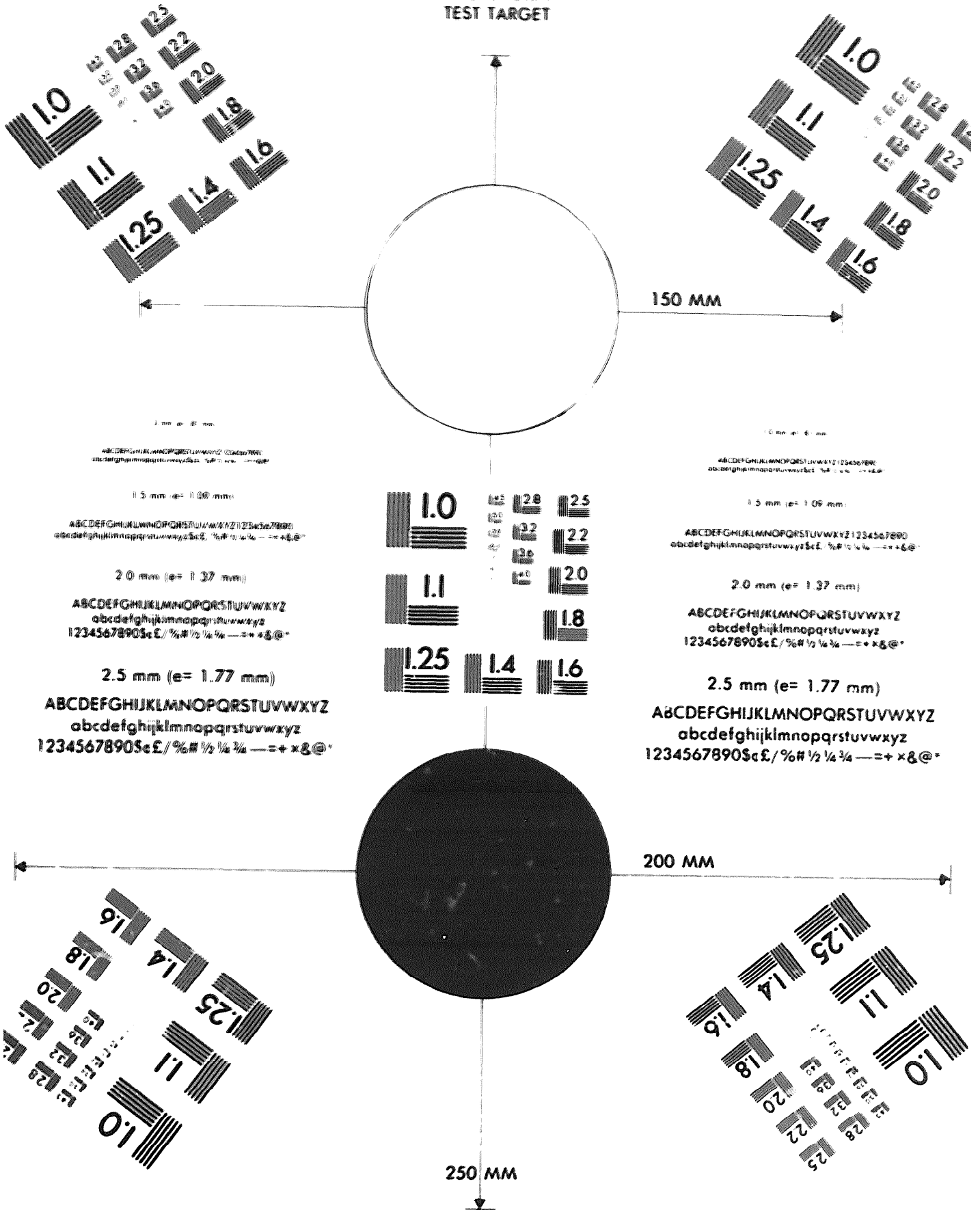
**DATE**







MICROFORM  
TEST TARGET



1.0 mm (e= 0.30 mm)

ABCDEFGHIJKLMNQRSTUWXYZ 01234567890  
abcdefghijklmnopqrstuvwxyz \$%# 1/2 1/4 3/4 = + x & @

1.5 mm (e= 0.48 mm)

ABCDEFGHIJKLMNQRSTUWXYZ 01234567890  
abcdefghijklmnopqrstuvwxyz \$%# 1/2 1/4 3/4 = + x & @

2.0 mm (e= 0.63 mm)

ABCDEFGHIJKLMNQRSTUWXYZ  
abcdefghijklmnopqrstuvwxyz  
1234567890 \$%# 1/2 1/4 3/4 = + x & @

2.5 mm (e= 0.77 mm)

ABCDEFGHIJKLMNQRSTUWXYZ  
abcdefghijklmnopqrstuvwxyz  
1234567890 \$%# 1/2 1/4 3/4 = + x & @

1.0 mm (e= 0.30 mm)

ABCDEFGHIJKLMNQRSTUWXYZ 01234567890  
abcdefghijklmnopqrstuvwxyz \$%# 1/2 1/4 3/4 = + x & @

1.5 mm (e= 0.48 mm)

ABCDEFGHIJKLMNQRSTUWXYZ 01234567890  
abcdefghijklmnopqrstuvwxyz \$%# 1/2 1/4 3/4 = + x & @

2.0 mm (e= 0.63 mm)

ABCDEFGHIJKLMNQRSTUWXYZ  
abcdefghijklmnopqrstuvwxyz  
1234567890 \$%# 1/2 1/4 3/4 = + x & @

2.5 mm (e= 0.77 mm)

ABCDEFGHIJKLMNQRSTUWXYZ  
abcdefghijklmnopqrstuvwxyz  
1234567890 \$%# 1/2 1/4 3/4 = + x & @

250 MM

200 MM

150 MM